



TECHNICAL SPECIFICATION

(SC Fast Connector)

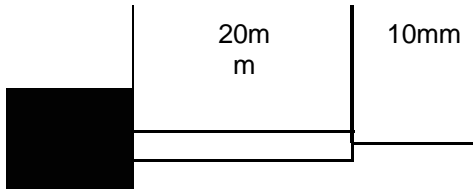
CENKABLO
perfectLINK

→ SC Fast Connector
Mechanical Fiber Optic Connector-Fiber Pre-embedded Tech



- 1 SC/PC uses the blue shell, SC/APC shell using the Green Party.
2. This product is suitable for 3.0*2.0mm cable.
3. Please ensure that the construction environment should be within the allowable range.
4. Failure to follow "Operational Instruction", all the problems caused by users will be at your own risk.
5. All the tools involved in this Operational Instruction should be configured by users themselves.
6. The average insertion loss values is smaller or equal to 0.25db (typical 0.2db), the average return loss value is more than or equal to 45db.

Cut-length diagram of prefabricated fiber:





CENKABLO
perfectLINK

TECHNICAL SPECIFICATION

(SC Fast Connector)



Miller clamp



Guide rail

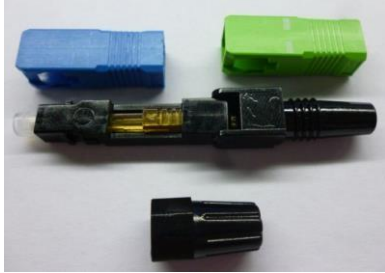


Stripper



Fiber Cleaver

Assembly operation process:



Take the components apart as picture.



Insert the cable through the screw boot.



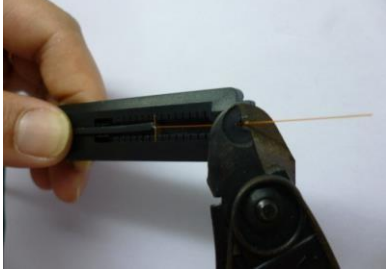
Remove the cable jacket by the stripper, and the stripped cable length should be more than 45mm.



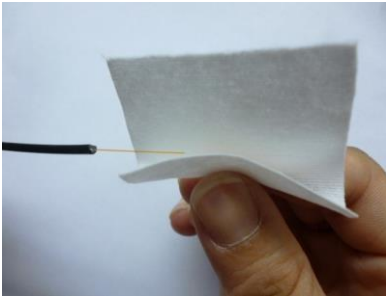
TECHNICAL SPECIFICATION

CENKABLO
perfectLINK

(SC Fast Connector)



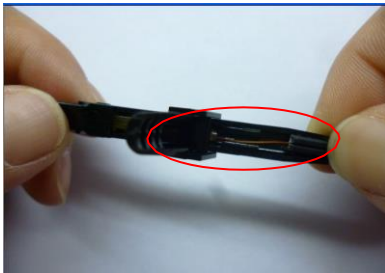
Put the cable into the guide rail, strip the coating layer from the 1mm point lower than the guide top by Miller plier.



Clean the bare fiber carefully by alcohol wipe.



Put the cable into the guide rail again, and cut the fiber by the fiber cleaver as picture .



Insert the prepared fiber into the connector, leaving the fiber (the red circle part) bending at the 2 mm height.



Push the slider ahead till the end line in Red circle, shutdown the tail cover and hold it tightly



TECHNICAL SPECIFICATION

CENKABLO
perfectLINK

(SC Fast Connector)



Screw on the boot, put on SC shell,
and then the assembly finishes.

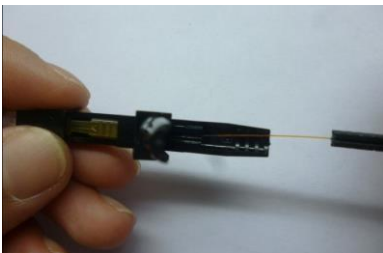
Repeat using processes:



Put on the dust cap, remove
SC square case.



Push the slider backward till
the end as picture



Unscrew the boot, and gently
pull out the cable.



TECHNICAL SPECIFICATION

CENKABLO
perfectLINK

(SC Fast Connector)

Package & delivery

The package will be packed according to standard export requirements, customer satisfaction is our target. Label printing : Customer logo or customized package are available

Inner packing: 10pcs in a blister box

Outer packing: the carton will be packed with sack, well protect carton from dust and wet.



Applications:

CATV & FTTH Telecommunication networks
Local area networks (LAN)
Wide area networks (WAN)
Premise installations
Data processing networks
Video and military active device termination
Optical Distribution Frame
Optical Network Equipments